

Company mission

Providing high quality pipe fittings for global users.

www.sunnysteel.com

SUNNY STEEL ENTERPRISE LTD.

No.273, Siping Road, Shanghai,
200081, China

Tel.: +86 21 3378 0199

Fax: +86 21 6185 1035

Email: sales@sunnysteel.com



Customer first, quality supremacy, integrity, perfection, unity, struggle.

Dismantling joint Rubber expansion joint Metal expansion joint

Company mission:

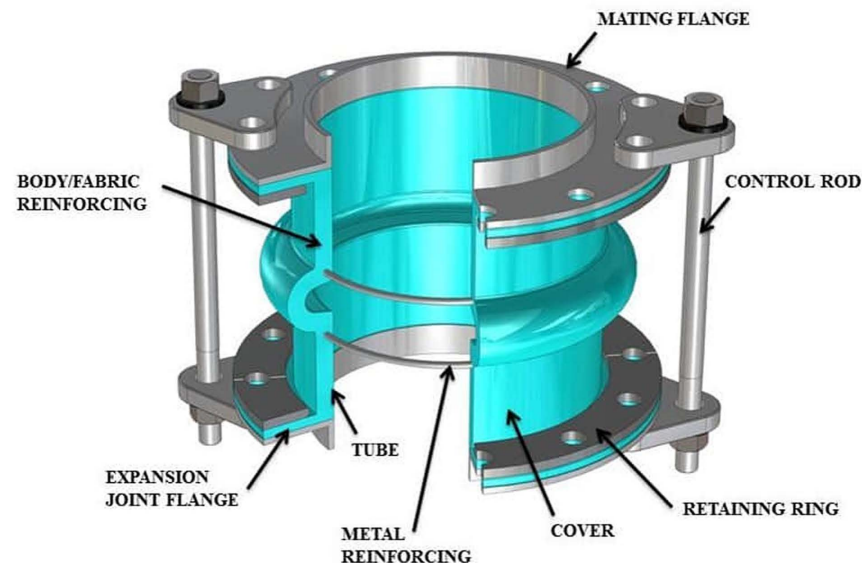
Providing high quality pipe fittings for global users.

Company vision:

1. Creating global famous brands in the pipe fitting industry.
2. Create a modern enterprise with a dream, a culture, love and righteous.

Company values:

Customer first, quality supremacy, integrity, perfection, unity, struggle.



ABOUT SUNNY STEEL

Sunny Steel Enterprise Ltd. is a professional steel exporter in China. Sunny Steel is a global well-known high-quality abrasion-resistant pipes and fittings supplier, specializing in cost-effective solutions to wear problems by supplying high-tech materials such as ceramic, cast basalt and rare earth alloys.

This approach coupled with quality manufacturing processes, well-qualified, trained and competent personnel has enabled us to offer a more comprehensive range of products against wear from a single source. Products are engineered the latest design and manufacturing facility to provide realistic and cost effective solutions supporting our customers to maintain a competitive edge in their industry.

Rubber expansion joint

A rubber expansion joint is a flexible connector manufactured from natural or synthetic elastomers, technical textiles and metal reinforcements. Rubber expansion joint can also be called flexible rubber joints, rubber soft connections, soft joints, flexible rubber joints, rubber expansion joints, shock absorbers, etc. They are pipeline joints with high elasticity, high air tightness, medium resistance and climate resistance. It can reduce the vibration and noise of pipeline, and compensate the thermal expansion and contraction caused by temperature change.



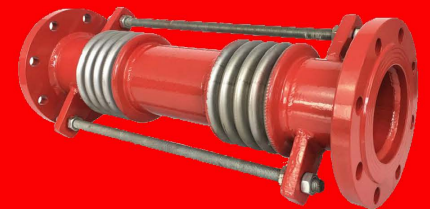


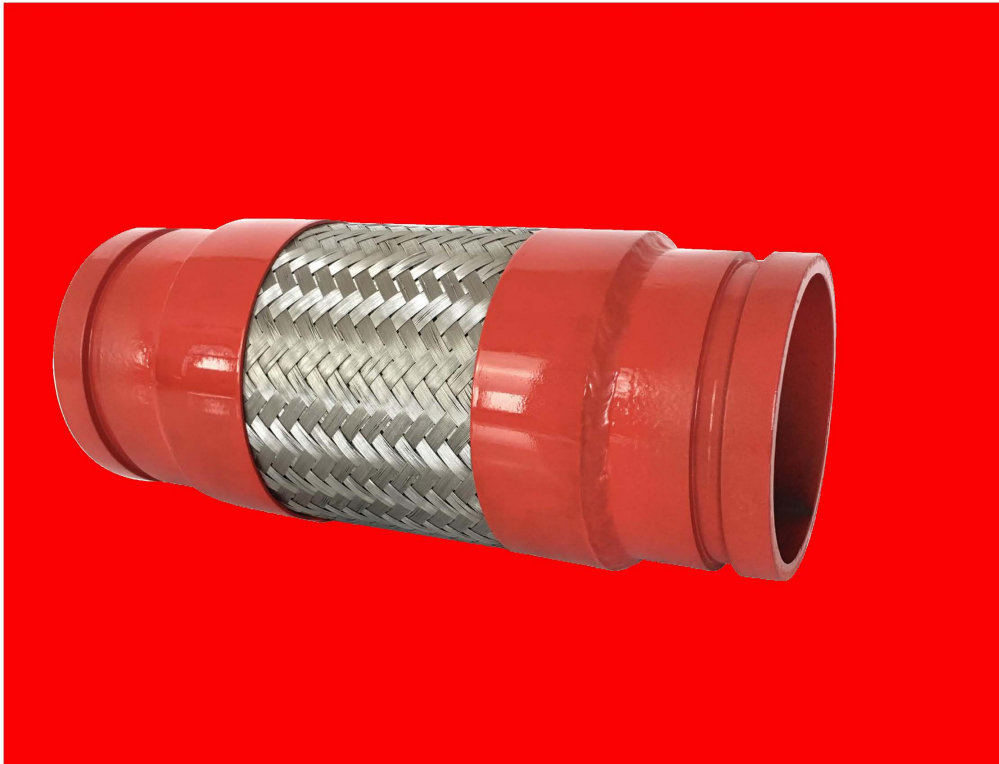
Bellows Expansion joint

Bellows Expansion Joints are great for accommodating axial, lateral and angular movements for a wide array of piping applications.

Expansion Joint Installation

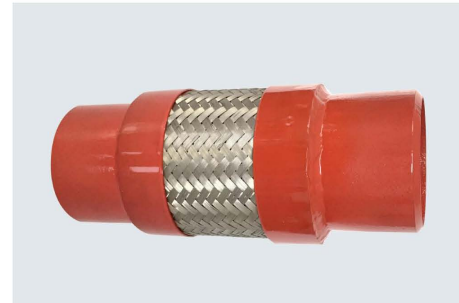
The bellows of an expansion Joint is manufactured from relatively thin material in order to provide the flexibility needed to absorb the specified movement. The life of the Expansion Joint can be shortened if the unit is improperly handled and/or installed. This can arise from direct physical damage to the bellows through stresses imposed during installation, or by other factors. Therefore some basic instructions must be followed having safe and proper installation of Expansion Joints.





Stainless steel metal hose

Stainless steel metal hose is a kind of flexible hose with high quality in modern industrial pipeline.



Welded stainless steel metal hose

Working pressure: 1.0mpa/1.6mpa
Design working temperature: 250℃
Applicable fluid: water, hot water, oil, steam gas
Standard material: 304/316/Q235



Flanged loose sleeve metal hose

Working pressure: 1.0mpa/1.6mpa
Design working temperature: 250℃
Applicable fluid: water, hot water, oil, steam gas
Standard material: 304/316/321



Stainless steel flanged metal hose

Working pressure: 1.0mpa/1.6mpa
Design working temperature: 250℃
Applicable fluid: water, hot water, oil, steam gas
Standard material: 304/316/321



Metal expansion joint MEJ series



Dismantling joint

Body:carbon steel Q235\304\316\cast iron
Bolt and nut:Q235\304\316



Light dismantling joint

Body:carbon steel Q235\304\316\cast iron
Bolt and nut:Q235\304\316



Universal Coupling

Body:carbon steel Q235\304\316\cast iron
Bolt and nut:Q235\304\316



Flange Adapter

Body:carbon steel Q235\304\316\cast iron
Bolt and nut:Q235\304\316



Double flanged expansion joint

Body:carbon steel Q235\304\316\cast iron
Bolt and nut:Q235\304\316



Spherical joint

Body:carbon steel Q235\304\316\cast iron
Bolt and nut:Q235\304\316





Non thrust sleeve compensator

Sleeve compensator

套筒补偿器



Single flow sleeve compensator

slip pipe: Chromium plating in carbon steel/304
Other: carbon steel

Rotary compensator

slip pipe: Chromium plating in carbon steel/304
Other: carbon steel



Spherical compensator

slip pipe: Chromium plating in carbon steel/304
Other: carbon steel



Flexible expansion joint
可挠伸缩管



Pipe settler
管道沉降器



Metal Double ball expansion joint
金属双球伸缩接头



Three dimensional spherical compensator
三维球形补偿器

